



ST MARY'S
COLLEGE

NEWSLETTER

ISSUE 9 - JUNE 2022



Encore ! Bravo !

It has been an inspirational term for 'Team Performing Arts' with two huge public performances. Our successful collaboration with Endsleigh Primary School resulted in our site-specific performance at the world famous 'The Deep'. The students created pieces based on environmental issues facing our oceans and inhabitants as well as paying tribute to the pioneering Headscarf Revolutionaries women of Hull and the Triple Trawler Tragedy.



The week after that we took up a day's residency at Hull Truck Theatre for our annual SM6 Performing Arts celebratory cabaret performance. Our wonderful Year 9 students all attended the matinée and the evening performance open to the public. We stood with pride as our students took one final bow.

MR LANCASTER
ON BEHALF OF THE FACULTY PERFORMING ARTS

WE VALUE YOUR VIEWS

Ofsted Parent View gives you the chance to tell Ofsted what you think of your child's school. The questionnaire can be completed at any time - you don't have to wait until the school is being inspected.

Go to :
<https://parentview.ofsted.gov.uk/> or scan the QR code below to go to the Ofsted Parent View web page.

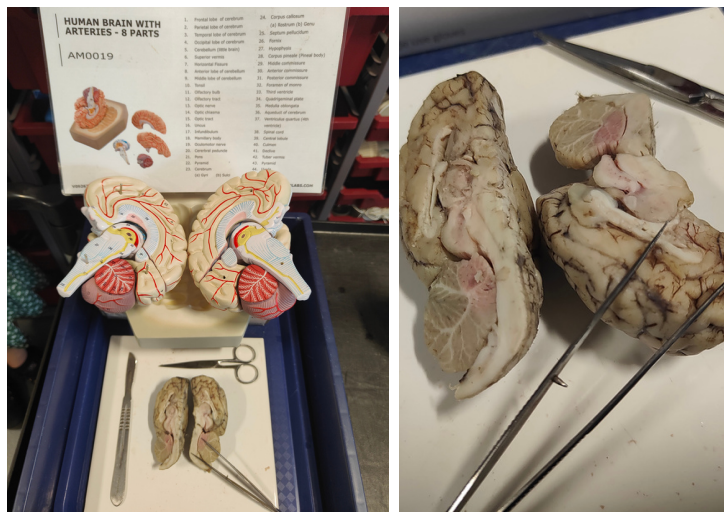
TAKE SURVEY



SAVE THE DATE

- Friday 1st July : Year 11 prom
- Saturday 2nd July : Year 13 prom
- 13-15th July : Matilda the Musical, Key Stage 3/4 production
- Wednesday 20th July (1pm) school closes for the summer break

Our Year 8 **Medical Mavericks** have read an A level Psychology textbook this month together, created pictures and labelled diagrams of the brain with Miss Alsbury and then completed a dissection with Mr Townsend.



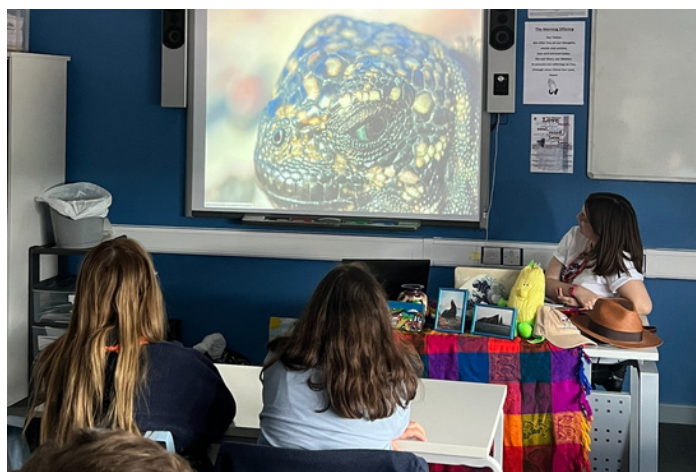
Four SMC Music students recently gained Grade 8 distinction marks in their Singing exams over the last year. A remarkable achievement gained at the highest grade possible. Congratulations!



36 SM6 students attended a recent football enrichment tournament organised by the PE Department. A special mention must go to Grace Austin who was the sole female representative on the night. Well done to the 'Pink Heads' team pictured below on winning the tournament and the best dressed award!!



Leanne, who worked for the Charles Darwin Foundation, recently came into school to speak to Year 9 students about Ecuador and the Galápagos Islands. Leanne worked for the foundation on the Galápagos Islands and spoke to students about a range of different animals, foods and traditions.



SMC INTERNATIONAL WEEK 2022

International Week is always a really important week for our community and a highlight in the school calendar.

St Mary's College is proud of the number of diverse nationalities of our students and amazed that over 45 different native languages are spoken across the college; some of our students are expertly bilingual, some are even polyglots.

This year we continued to celebrate the cultural diversity of the college and help our students to learn more about different countries of the world!

Activities in 2022 included a week of themed lunches in the school canteen, an international lunchtime festival visited by students in all year groups, specialist music and creative workshops, guest speakers, sports from around the world and much more. We are a truly global community at SMC!



FOR STUDENTS LEAVING SMC/SM6 THIS YEAR

May the road rise up to meet you.
May the wind always be at your back.
May the sun shine warm upon your face,
and rains fall soft upon your fields.
And until we meet again,
May God hold you in the palm of His hand

AN IRISH BLESSING



CLASS OF 2022 YEAR 11 LEAVERS



ROALD DAHL'S **Matilda** THE MUSICAL JR.

WEDNESDAY 13TH - FRIDAY 15TH JULY 2022 7PM



13th, 14th & 15th July 2022 at 7pm
Buy your tickets now at: www.ticketsource.co.uk/smchull

HELPFUL CONTACTS

St Mary's College
Cranbrook Avenue
HULL. HU6 7TN

For main reception and enquiries:

Tel 01482 851136

Email: admin@smchull.org

Twitter: @SMCHull

Facebook: @smchull



Please note—we are unable to reply to comments on our social media accounts. Please do not reply to text messages sent by the school and instead use the email address above to contact us.

www.smchull.org